

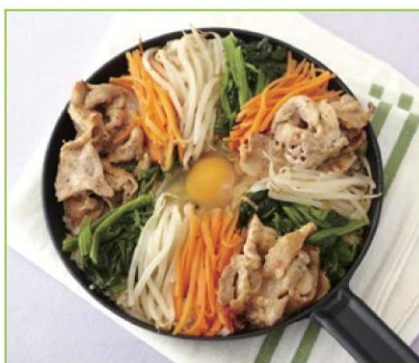
## SESAME SAUCE ROASTED COARSE TYPE 250ml



Rich & flavorful sesame seeds are used to make creamy and silky sesame sauce. Pour it, mix it, or use it as a dipping sauce on wide variety of dishes such as salad, shabu-shabu, and vinaigrette dressed dishes, tofu, cold chicken, deep fried prawns and pork etc.

### Product Information:

<b>Product ID</b>	86289
<b>JAN Code</b>	4902106862710
<b>ITF Code</b>	14902106862717
<b>Food Service / Retail</b>	Retail
<b>Size x Pack</b>	250mlx12
<b>Case Size</b>	Length: 276mm Width: 204mm Height: 172mm
<b>Unified weight</b>	4kg
<b>Shelf Life</b>	360 days



### Ingredients:

WATER, RAPESEED OIL, SESAME, HIGH FRUCTOSE SYRUP, DISTILLED VINEGAR, SALT, SESAME PASTE, SUGAR, MONOSODIUM GLUTAMATE, EGG YOLK POWDER (ENZYMATICALLY DECOMPOSED YOLK AND SALT), HYDROXYPROPYL DISTARCH PHOSPHATE, SOY SAUCE (WATER, SOYBEANS, WHEAT AND SALT), YEAST EXTRACT, TAMARIND SEED GUM, FLAVORS, SUCRALOSE.

(CONTAINS WHEAT, SOYBEANS AND EGG)

### Notes:

The ingredients are declared based on related Singapore food labeling regulation.

### Nutrition Facts (per 100g):

<b>Energy</b>	312kcal
<b>Moisture</b>	54.1g
<b>Protein</b>	2.9g
<b>Fat</b>	29.4g
<b>Carbohydrate</b>	9.2g
<b>Ash</b>	4.4g
<b>NaCl Equivalent</b>	4.1g
<b>Sodium</b>	1630mg
<b>Saturated Fatty Acid</b>	2.40g
<b>Dietary Fiber</b>	1.5g
<b>Others</b>	-

### Notes:

The analytical methods meet the requirements of the Nutrition Labeling Standard, set by the Japanese Health Promotion Act.

Images are for illustrative purposes only